

# Livestock Production

**HEIFER HOME:** Registered Angus heifers graze renovated pasture cells from May through November.



electric wire. Brandon used wood posts instead of steel posts on the perimeter and cross fences because the electric wire won't short out if it comes off a connector and touches the wood post like it would with a steel post.

"The pasture is about 15 miles from home," Brandon says. "I didn't want to always be worrying about if the cows were out."

The Petersons are running 30 bred heifers in the pasture from May through

**SUN POWER:** A solar panel generates the electricity to run the pump that fills stock tanks with water from the fenced-off dugout.

November. They rotate the animals weekly through the paddocks, which gives the grass in each paddock about a month's rest between grazings.

**Increased production**

The grasses in the pastures are mostly cool-season species. Brandon tries to graze them often enough that they don't set seed heads. When they set heads, the grasses stop growing leaves, and the nutritional value in the leaves declines. If the grasses are clipped off about once a month, they keep growing leaves.

"I think we have been able to increase grass production 50%," he says.

The Petersons also have protected the soil from erosion and have improved water quality, says Jeff Loof, NRCS district conservationist, Union County, S.D.

The pasture rehab project was a big investment for the Petersons, even with the EQIP cost-share.

"But I think it will be worth it in the long run," Brandon says.



*Annual Production Sale*  
**Saturday, February 6, 2016**  
 12:30 CST at the ranch

## Upstream Ranch

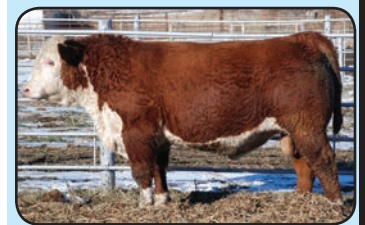
**Brent and Robin Meeks**

45060 Upstream Rd  
 Taylor, NE 68879

Home 308-942-3195  
 Cell 308-214-0719

**Selling 325**  
**Horned and Polled Hereford Bulls**  
 including 175 coming 2-yr olds and 150 fall yearlings  
**Selling 50 Bred Heifers**

go to [upstreamcattle.com](http://upstreamcattle.com) for videos  
 and sale catalog  
[upstreamranch@gmail.com](mailto:upstreamranch@gmail.com)



**4700**

BW WW YW Milk M&G REA Marb  
 3.1 72 116 31 67 0.56 0.3



**4190**

BW WW YW Milk M&G REA Marb  
 4.1 62 113 26 57 0.76 0.25



**4298**

BW WW YW Milk M&G REA Marb  
 2.6 53 86 24 50 0.53 0.27



**4386**

BW WW YW Milk M&G REA Marb  
 2 52 81 30 56 0.38 0.42



**4507**

BW WW YW Milk M&G REA Marb  
 4.6 65 99 29 61 0.61 0.21



**4562**

BW WW YW Milk M&G REA Marb  
 5.1 60 99 31 61 0.5 0.24